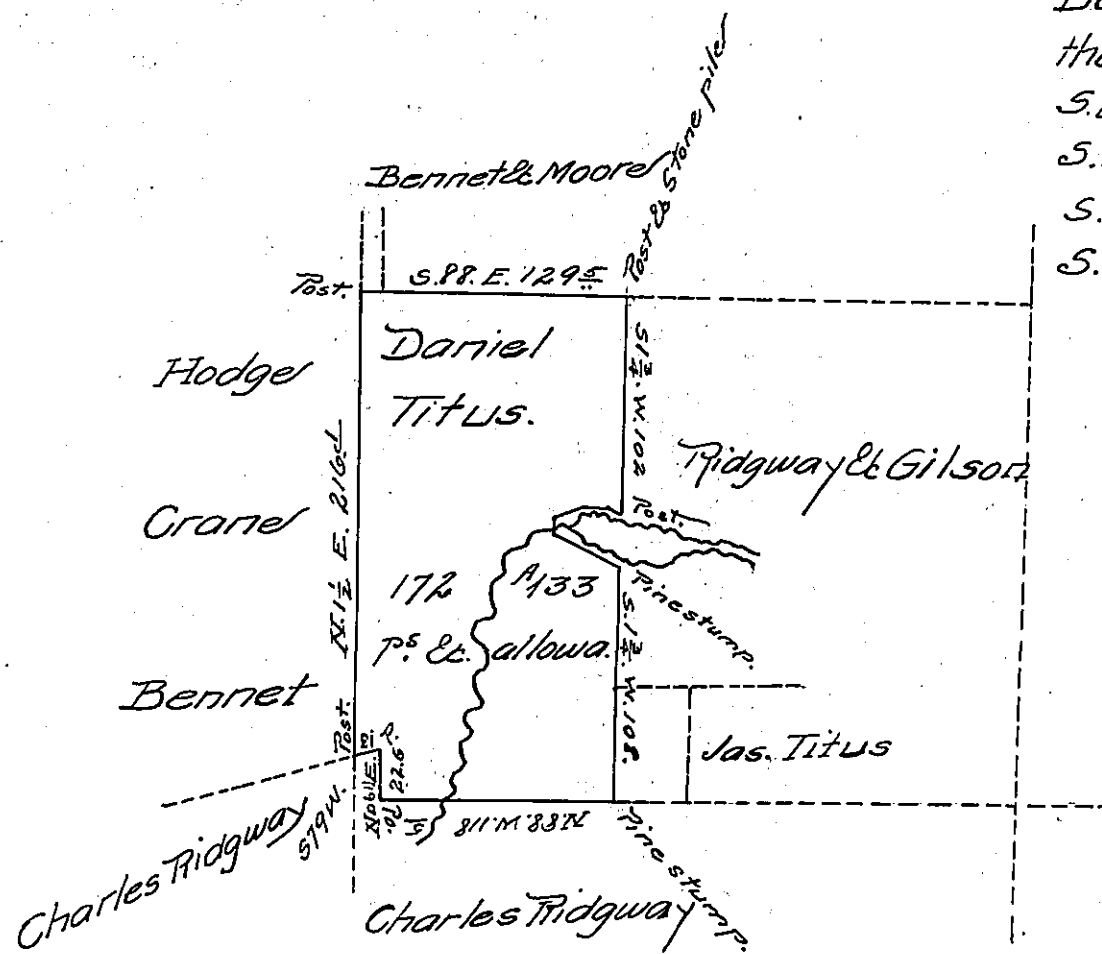


Courses & distances round Ridgway mill Pond.
 Beginning at a Post
 then N 54 W 62 p^s Pine stump
 S 84 W 12 p^s Pine stump
 S 59 W 16 p^s Post
 S 6 p^s Post
 S 61 E 31 p^s Pine stump



©. 193-93

In pursuance of the settlement and improvement of Daniel Titus bearing date in 1800. Surveyed the above described Western part of tract N^o 22 on the 19th day of Sept 1852 for Daniel Titus ~~the~~ Situate in Oil creek township Cr. Co. containing 172 acres 133 perches & allowance of six per cent for Roads &c.

A. W. Mumford Co. S. P.

To J. P. Brawley Esq. Sec. Gen.

I do hereby certify that it does not appear from any Documents in my office that the above described piece of land has been otherwise appropriated.

A. W. Mumford Co. S. P.

IN TESTIMONY that the above is a copy of the original remaining on file in the Department of Internal Affairs of Pennsylvania, made conformably to an Act of Assembly approved the 16th day of February 1833, I have hereunto set my hand and caused the Seal of said Department to be affixed at Harrisburg, this Eighth day of March 1907.

Grace V. Brown
 Secretary of Internal Affairs.